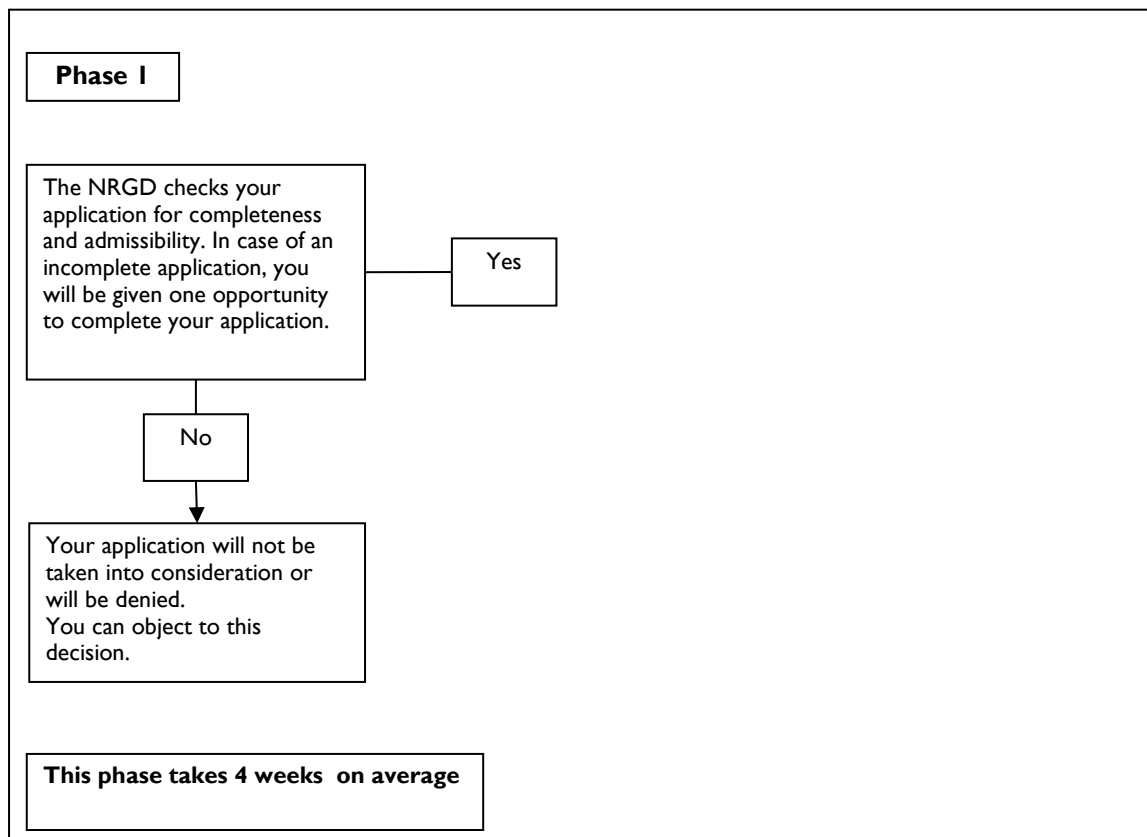
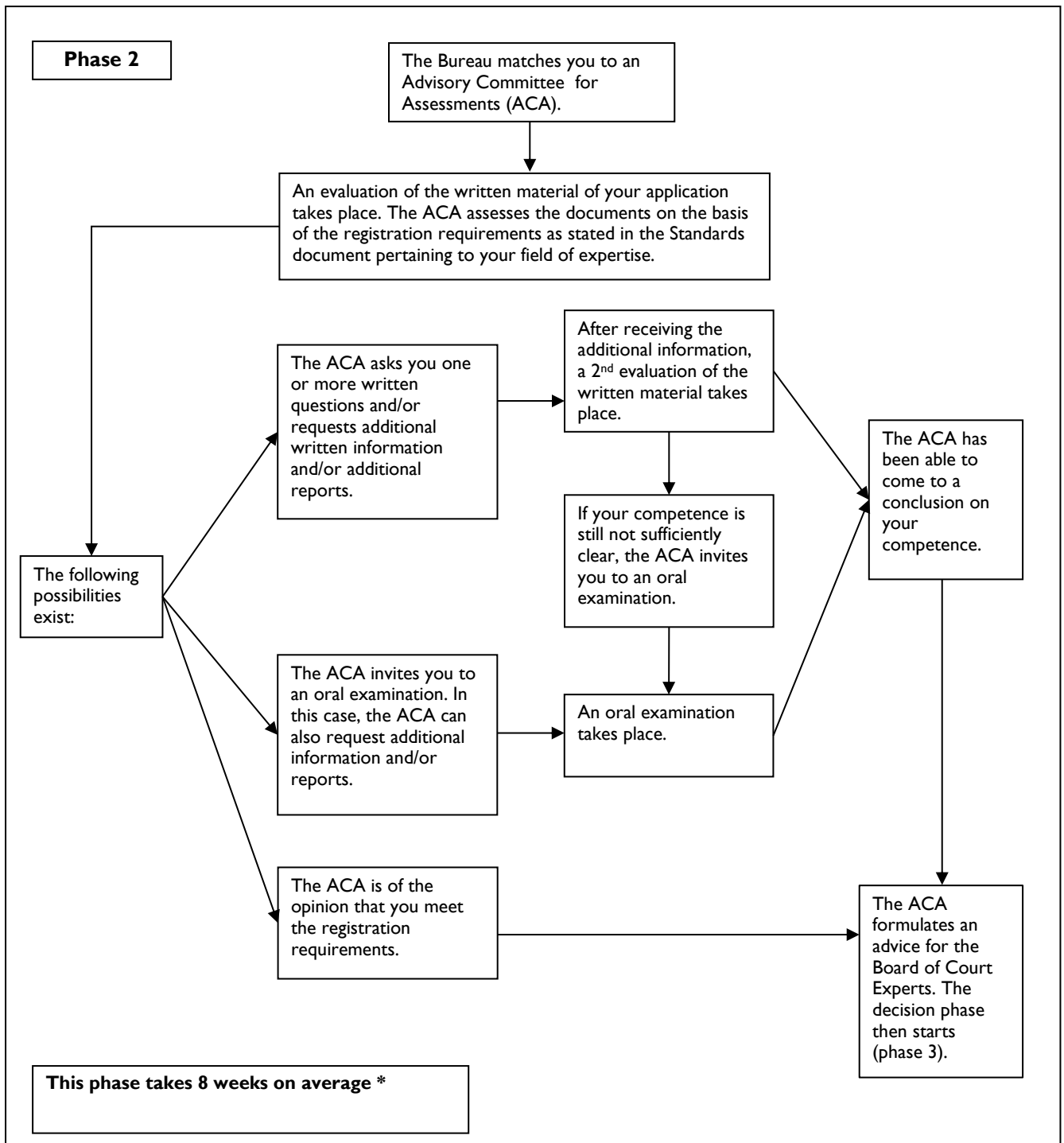


Flowchart (re-)registration procedure NRGD

Please download the application package from the website www.nrgd.nl. At the top of the NRGD home page you can click on *English* for the English version of the website. A completed and signed application package can be send to the NRGD by e-mail to beheer@nrgd.nl.

NB: Every (re-)registration procedure consists of three phases: the application phase (phase 1), the assessment phase (phase 2) and the decision phase (phase 3). In the flowchart below, the completion times are average estimations and give you an indication of the time that is involved in each phase of the (re-)registration procedure. It is possible that a phase requires more time than the estimation given in the flowchart. When a considerable delay occurs in processing your application, the NRGD will of course inform you.





* Factors that may delay this phase of the registration procedure:

1. Translation of your case reports;
2. Objections to or excusing of assessors;
3. Requests for additional written information and/or an oral examination.

Phase 3

A. The ACA advises the Board to register you (conditionally).

A.1 The Board decides to register you.

A.2 The Board decides to register you conditionally

A.3 The Board decides not to register you.

B. The ACA advises the Board not to register you.

B.1 Against the advice of the ACA, the Board decides to register you.

B.2 Against the advice of the ACA, the Board decides to register you conditionally.

B.3 The Board decides not to register you.

You will receive the decision of the Board by email. You may object to the Board's decision.

This phase takes 4 weeks on average